

ZaurustF



# Déroulement de la présentation

- Présentation ZaurusFR
- Présentation des PDA
- Les différents systèmes
- Les applications
- Pour aller plus loin
- Distribution ZFR
- Contacts



# Présentation de ZaurusFR

- Communauté
- Association



# Communauté ZaurusFR

- Création : début 2003
- Mise en place d'un site internet
- Mise en place d'une mailing list
- Participation au salon Solutions Linux 2004
- Commande groupée
- Organisation de “bouffes”



ZaurusFR

# Association ZaurusFR

- Création Octobre 2004
- Gestion du site
- Organisation des rencontres
- Distribution ZFR



# Présentation des PDA

- Zaurus
- Yopi



ZaurusFr

# Zaurus SL-5000D



- StrongARM 206 (SA1110)
- Flash ROM : 16 Mo
- RAM : 32 Mo
- 320x240x16
- Batterie : 950 mAH



ZaurusFr

# Zaurus SL-5500



- StrongARM 206 (SA1110)
- Flash ROM : 16 Mo
- RAM : 64 Mo
- 320x240x16
- Batterie : 950 mAH



ZaurusFr



# Zaurus SL-A300



- XScale 200 MHz (PXA-210)
- Flash ROM : 16 Mo
- RAM : 64 Mo
- 320x240x16
- Pas de clavier



# Zaurus SL-B500 (SL-5600)



- XScale 400 MHz (PXA-250)
- Flash ROM : 32 Mo
- RAM : 64 Mo
- 320x240x16
- Batterie : 1700 mAH



ZaurusFr

# Zaurus SL-C700



- PXA-250
- Flash ROM : 32 Mo
- RAM : 64 Mo
- 640x480x16
- Batterie : 950 mAH



ZaurusFr

# Zaurus SL-C750



- PXA-255
- Flash ROM : 64 Mo
- RAM : 64 Mo
- 640x480x16
- Batterie : 950 mAH



ZaurusFr

# Zaurus SL-C760 et SL-C860



- PXA-255
- Flash ROM : 128 Mo
- RAM : 64 Mo
- 640x480x16
- Batterie : 1700 mAH



ZaurusFr

# Zaurus SL-6000 (L/W)



- PXA-255
- Flash ROM : 128 Mo
- RAM : 64 Mo
- 640x480x16
- BlueTooth ou WiFi
- Batterie : 1700 mAH



ZaurusFr

# Zaurus SL-C3000



- PXA-270 (416 MHz)
- Flash ROM : 16 Mo
- RAM : 64 Mo
- HD : 4 Go
- 640x480x16
- Batterie : 1800 mAH



ZaurusFr

# Yopi 3000

- StrongARM 206 MHz
- ROM : 16 Mo
- Flash : 64 Mo
- 240x320x16
- Non rétro éclairé
- Batterie : 1280 mAH





# Yopi 3500

- StrongARM 206 MHz
- Flash ROM : 32 Mo
- SDRAM : 128 Mo
- 240x320x16
- Batterie : 1500 mAH



ZaurusFr

# Yopi 3700

- StrongARM 206 MHz
- Flash ROM : 32 Mo
- SDRAM : 128 Mo
- 240x320x16
- Batterie : 2500 mAH

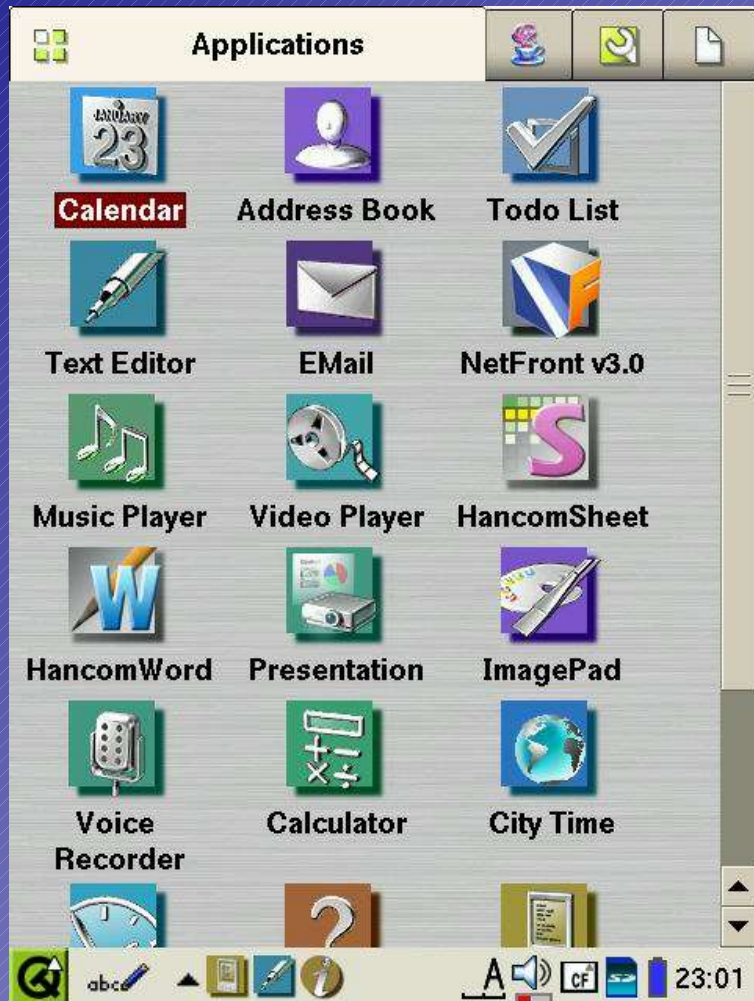


# Les différents systèmes

- ROM Sharp
- OpenZaurus / OpenEmbedded
- pdaXrom
- Familiar / Intimate
- Debian (ou debian+sharp)
- Gentoo



# ROM Sharp



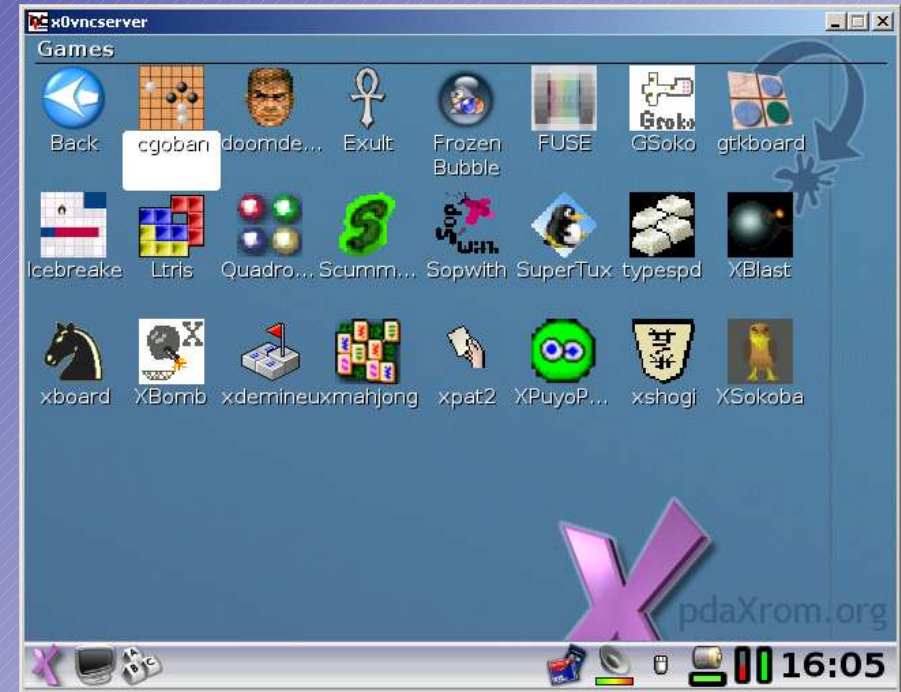
- Développée par Sharp
- Basée sur Qtopia
- Applis classiques
- Pas bcp d'évolutions

# OpenZaurus / OpenEmbedded

```
OpenZaurus 
ds_open(socket 1)
ds_open(socket 2)
cordmgr[384]: executing: './ide check hda'
cordmgr[384]: + cat: /var/lib/misc/pcmcia-scheme: No such fi
le or directory
cordmgr[384]: executing: './ide stop hda'
cordmgr[384]: + cat: /var/lib/misc/pcmcia-scheme: No such fi
le or directory
cordmgr[384]: + umount -u /dev/hda1
cordmgr[384]: executing: 'modprobe -r ide-cs'
ds_unregister_pccard_driver('ide-cs')
ds_releasesocket 0
ds_releasesocket 1
# cordmgr[384]: socket 0: ATA/IDE Fixed Disk
cordmgr[384]: executing: 'modprobe ide-cs'
ds_register_pccard_driver('ide-cs')
hda: SanDisk SDCFB-128, ATA DISK drive
ided of 0xc4885000-0xc4885001,0xc488500e on irq 35
hda: 250880 sectors (128 MB) w/16kB Cache, CHS=980/8/32
/dev/ide/host0/bus0/target0/lun0: p1
ide-cs: hda: Ucc = 3.3, Opp = 0.0
cordmgr[384]: executing: './ide start hda'
cordmgr[384]: + cat: /var/lib/misc/pcmcia-scheme: No such fi
le or directory
cordmgr[384]: + /sbin/fsck -Tn /dev/hda1
/dev/ide/host0/bus0/target0/lun0: p1
cordmgr[384]: + Logical sector size is zero
cordmgr[384]: + dosfsck 2.0, 20 Feb 2001, FAT32, LFN
cordmgr[384]: + mount -u -t auto /dev/hda1
/dev/ide/host0/bus0/target0/lun0: p1
/dev/ide/host0/bus0/target0/lun0: p1
# ls /
bin      etc      linuxrc  proc     tmp
boot    home    mnt      root    usr
dev     lib     opt      sbin    var
# uname -a
Linux zaurus 2.4.19-rmk4-cl1 #25 Sun Dec 29 02:44:07 EST 200
# arvu4l unknown
# uname -a
Linux zaurus 2.4.19-rmk4-cl1 #25 Sun Dec 29 02:44:07 EST 200
# arvu4l unknown
# cat /dev/fb0 > /mnt/cf/console
```

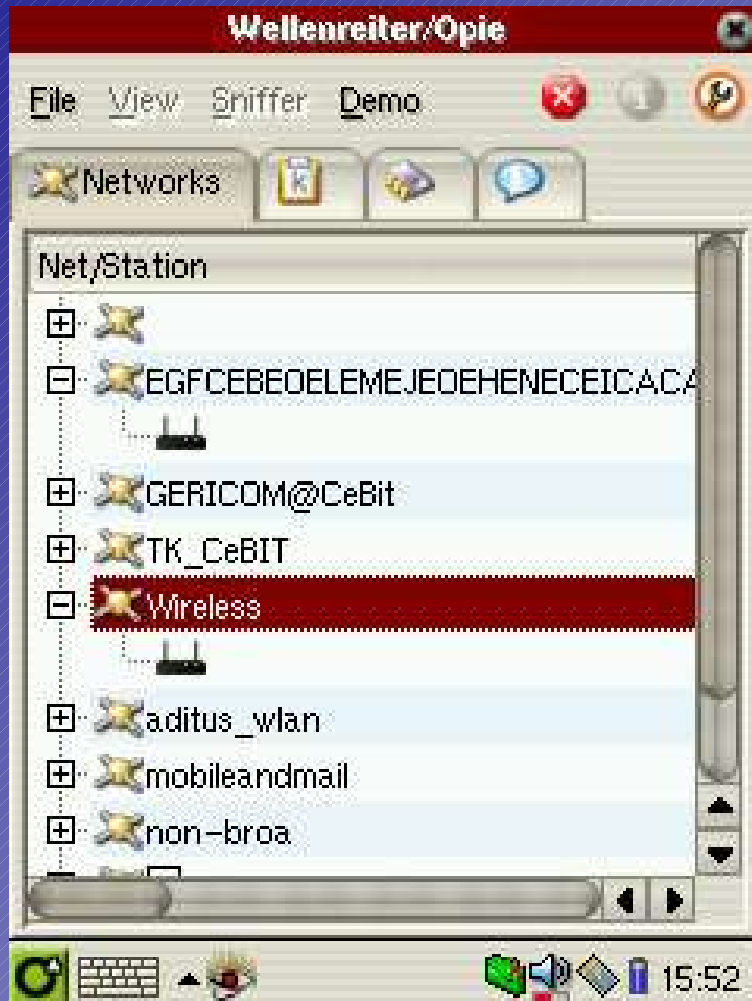


# pdaXrom





# Familiar / Intimate



- Qtopia
- Pour IPAQ
- Intimate = fork(familiar)

# Debian

The screenshot shows a Debian desktop environment with the IceWM window manager. A terminal window is open, displaying system statistics and a list of processes. A help window titled "Pocket Workstation - Debian on Handheld Computers" is also open, providing instructions for navigating the system.

Terminal output:

```
displays a listing of the most CPU-intensive tasks on the system, and
can provide a
sort the task
configured t
can either be
```

```
54 processes: 49 sleeping, 4 running, 0 zombie, 1 stopped
CPU states: 7.9% user, 92.1% system, 0.0% nice, 0.0% idle
6888K total, 29068K used, 816K free, 696K b
6888K total, 0K used, 0K free, 10724K c
```

PRI	NI	SIZE	RSS	SHARE	STAT	%CPU	%MEM	TIME	COMM
22	20	0	0	0	RUN	67.5	0.0	33:34	kapm
14	0	428	428	368	R	21.0	1.4	0:01	scsh
9	0	584	584	364	S	2.8	1.9	0:41	top
18	0	584	584	364	R	2.2	1.9	0:37	top
9	0	2252	2252	600	S	1.5	7.5	1:11	Xvnc
9	0	484	484	420	S	1.5	1.6	0:00	scsh
9	0	3160	1112	76	S	0.5	3.7	0:34	fbvnc
9	0	476	476	172	S	0.3	1.5	0:04	x-ter
9	0	508	508	204	R	0.3	1.6	0:05	x-ter
8	0	120	120	56	S	0.0	0.4	0:22	init
9	0	0	0	0	SW	0.0	0.0	0:00	keve
9	0	0	0	0	SW	0.0	0.0	0:00	off_
9	0	0	0	0	SW	0.0	0.0	0:00	batt
9	0	0	0	0	SW	0.0	0.0	0:00	batt
9	0	0	0	0	SW	0.0	0.0	0:00	shar
19	19	0	0	0	SUN	0.0	0.0	0:00	ksof
9	0	0	0	0	SW	0.0	0.0	0:20	kswa
9	0	0	0	0	SW	0.0	0.0	0:00	bdf

Manual page top(1) line 13

```
^# sleep 4; cru /sbin/scshotsd mydeb
^#
```



ZaurusFr



# Gentoo

```
(1 of 1) Compiling/Packaging (app-arch/cpio-2.5::usr/portage/app-arc - Terminal - Konsole
Sesión Editar Vista Marcadores Preferencias Ayuda
# emerge -B cpio
Calculating dependencies ...done!
>>> emerge (1 of 1) app-arch/cpio-2.5 to /
>>> Downloading http://gentoo.oregonstate.edu/distfiles/cpio-2.5.tar.gz
--17:32:50-- http://gentoo.oregonstate.edu/distfiles/cpio-2.5.tar.gz
=> `usr/portage/distfiles/cpio-2.5.tar.gz'
Connecting to gentoo.oregonstate.edu:80... connected!
HTTP request sent, awaiting response... 200 OK
Length: 185,480 [application/x-tar]

  OK ..... 27% @ 8.39 KB/s
 50K ..... 55% @ 13.04 KB/s
100K ..... 82% @ 11.39 KB/s
150K ..... 100% @ 8.43 KB/s

17:33:08 (10.14 KB/s) - `usr/portage/distfiles/cpio-2.5.tar.gz' saved [185480/185480]

>>> md5 src_uri ;-) cpio-2.5.tar.gz
>>> Unpacking source...
>>> Unpacking cpio-2.5.tar.gz to /var/tmp/portage/cpio-2.5/work
```



ZaurusFr

# Bonus !

- Choix du système
- Choix de l'environnement graphique
  - TinyX
  - IceWm
  - Opie
  - GPE
  - FluxBox
  - etc...



Applications en live !



ZaurusFr

Ok, on peut faire la même chose  
qu'avec n'importe quel PDA...

Peut-on aller plus loin ?



ZaurusFr

# Distribution ZFR

- Live CD installable
- Synchronisation
- Développement
- LFS 5.1, BLFS 5.0



# Contenu de la distribution ZFR

- Xterm + eterm
- Midnight commander
- Xfree 4.4.0
- FluxBox
- Links
- The gimp
- Eclipse
- PdaXrom sdk
- Openembedded
- Java sdk
- Evolution
- Multisync
- Gcc, perl, python



ZaurusFr

# Contacts

- Site internet : <http://www.zaurusfr.org>
- Forum : <http://externe.net/zaurus/forum>
- IRC : freenode, chan #ZaurusFR
- Liste de diffusion :  
<http://swamp.nerdfest.org/mailman/listinfo.cgi/zaurusfr>
- Distribution : <http://zfr.2m01.net>



Merci !

Des questions ?



ZaurusFr